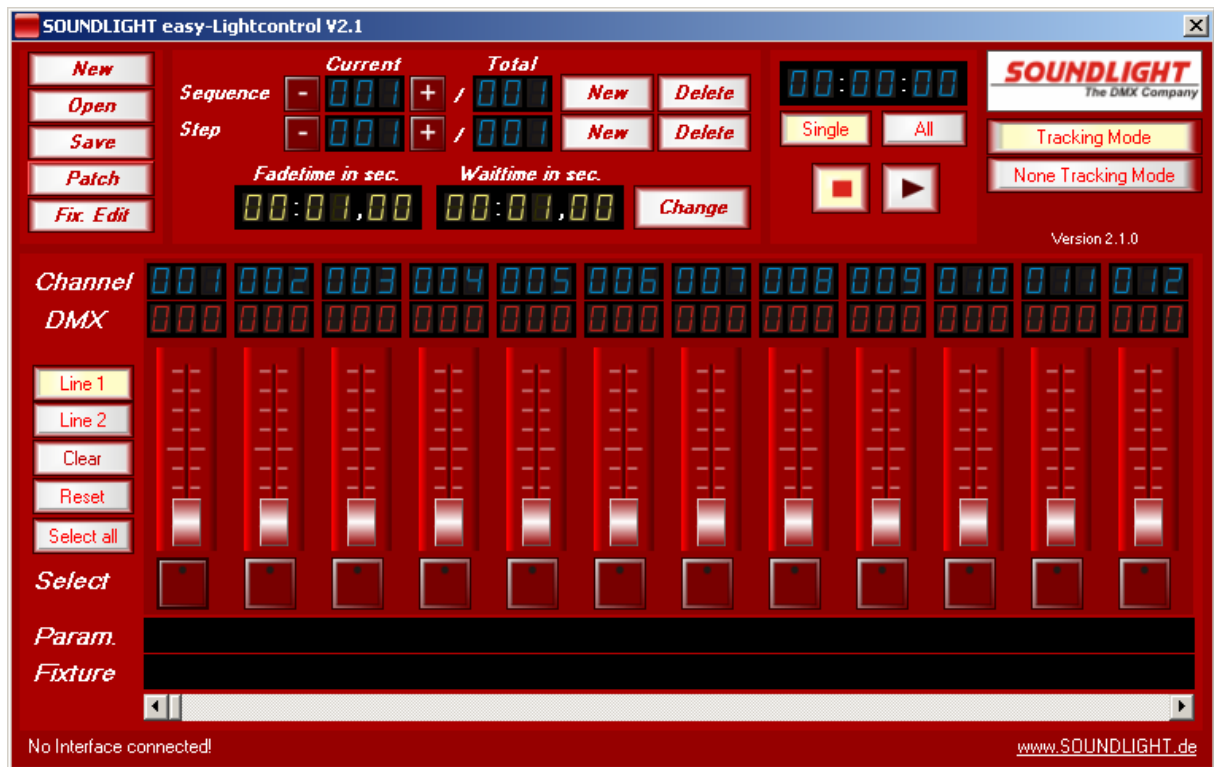
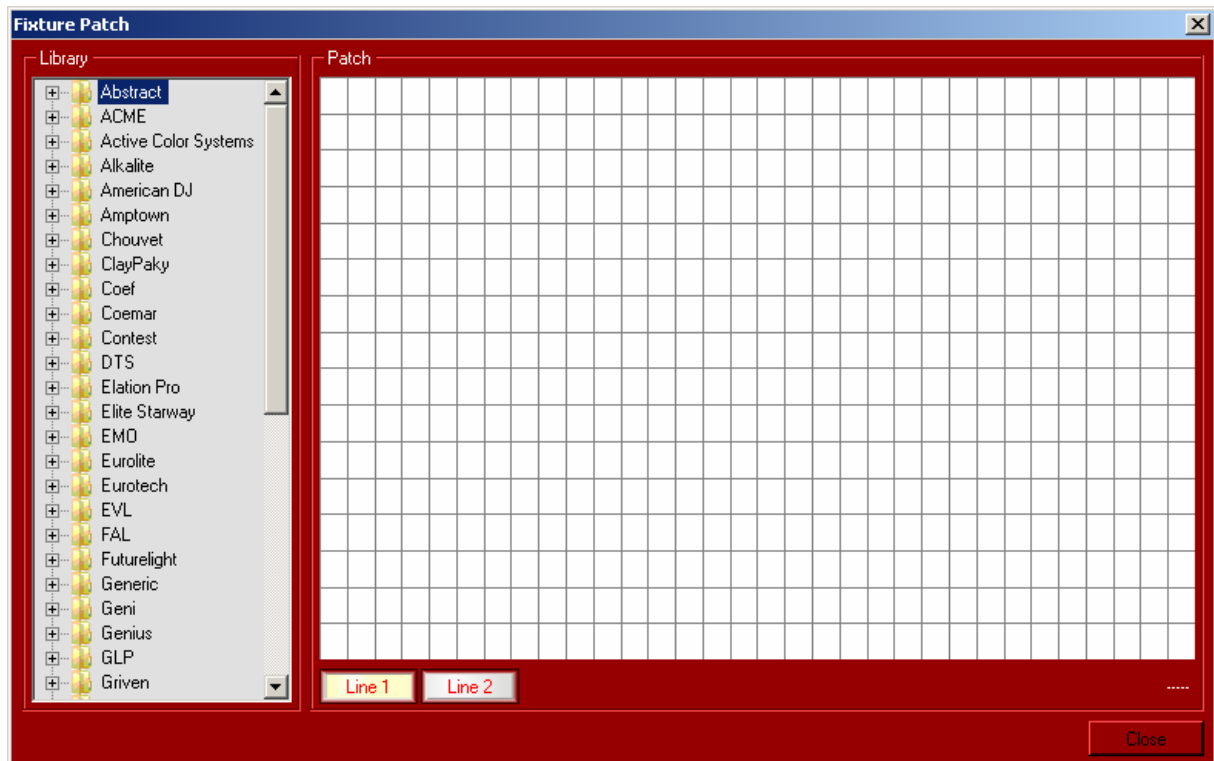


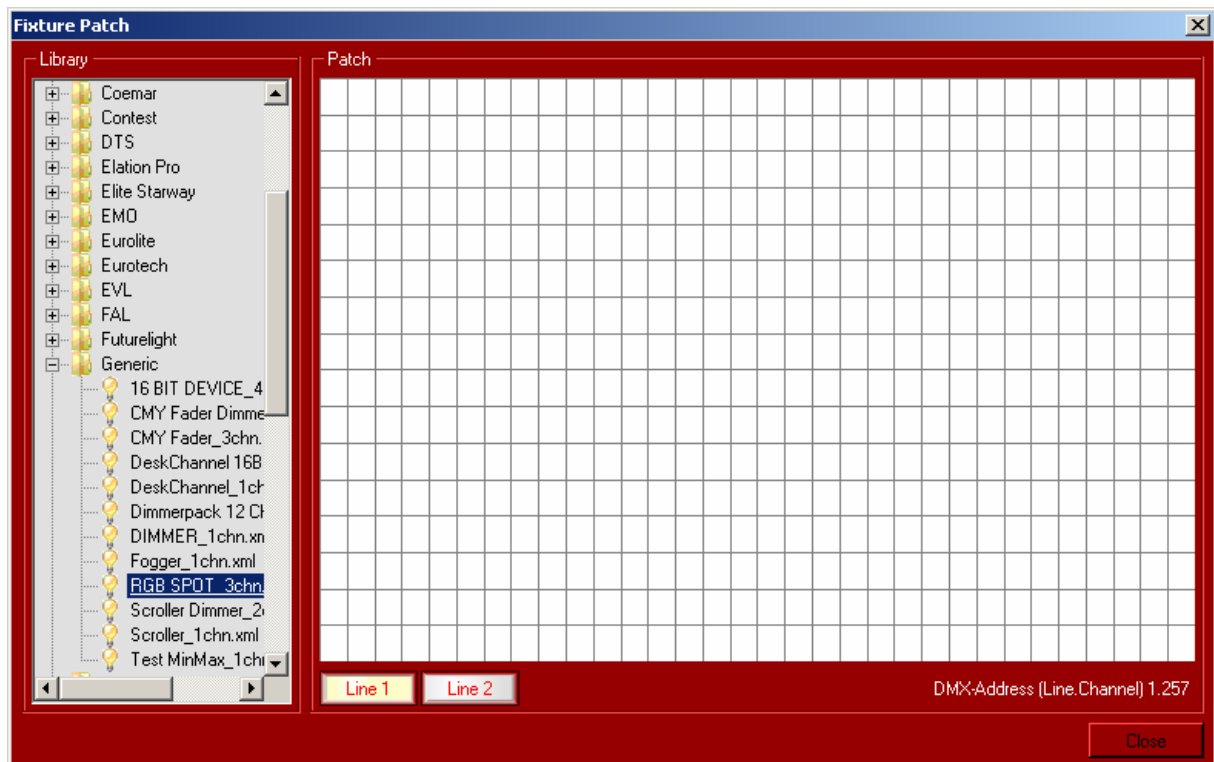
Startup Screen with empty patch:



Select „Patch“ on upper left, a new window will be open:

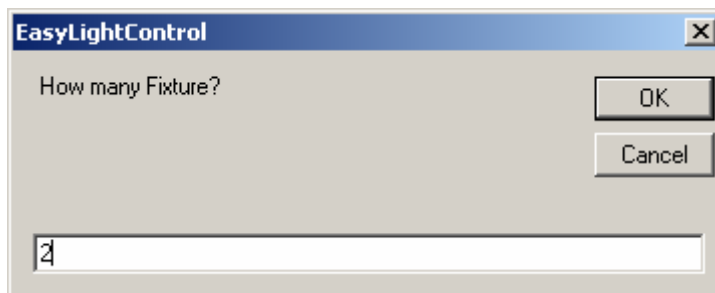


Select „Generic“ and then select “RGB\_Spot\_3Chn”:

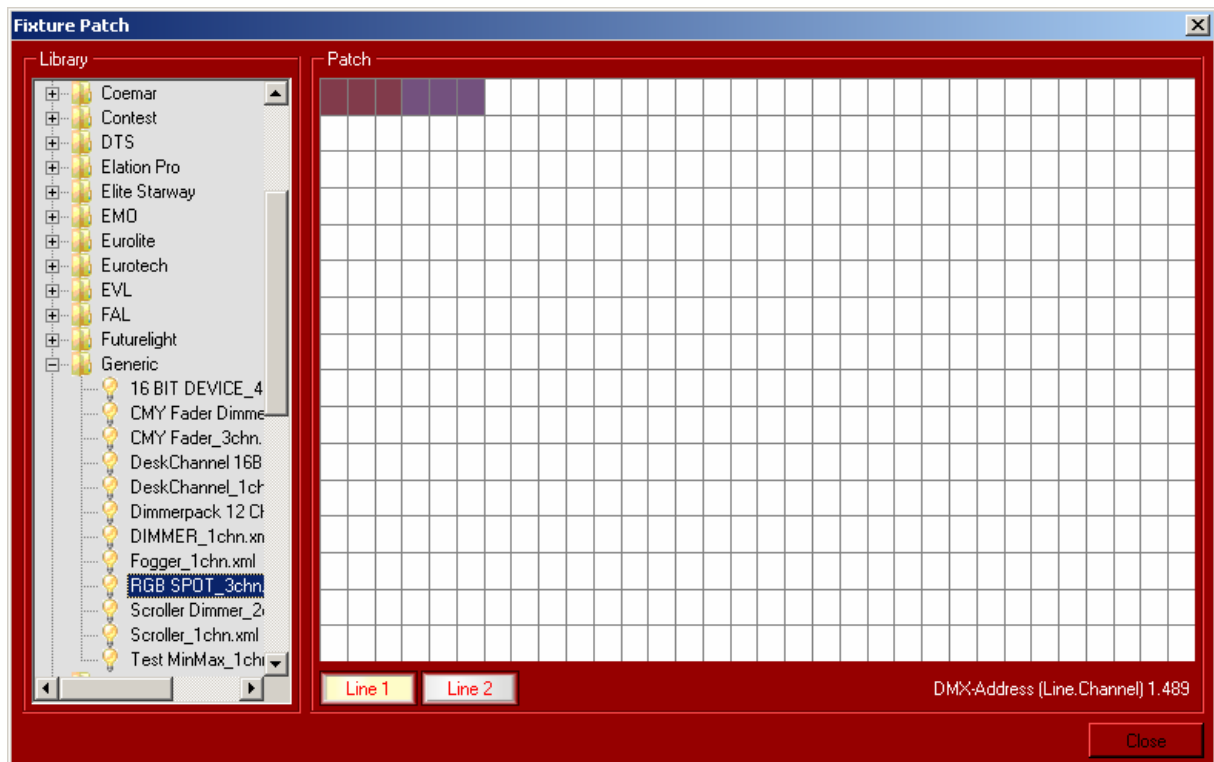


Select with **left mouse-key** (hold) and drop to the first channel:

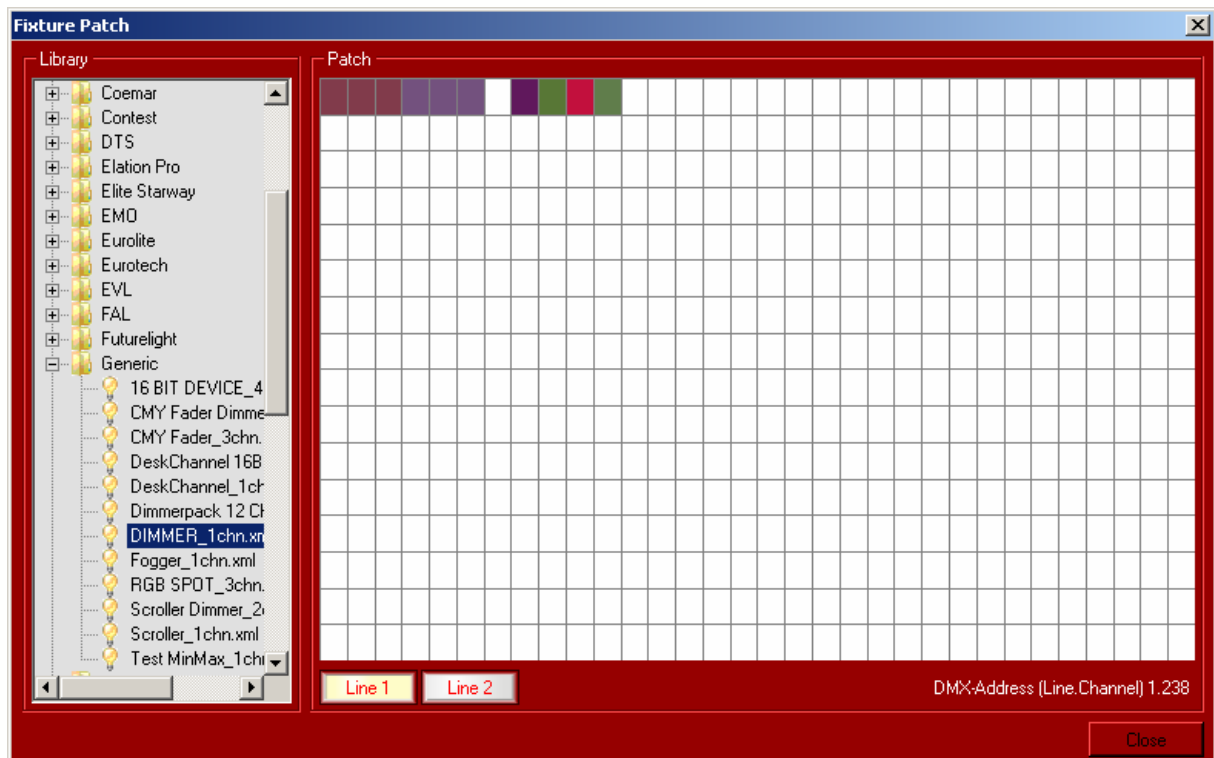
Answer the following window with “2”:



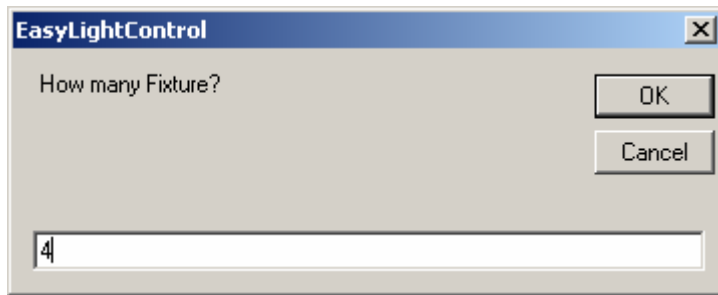
Now you see 2 patched devices :



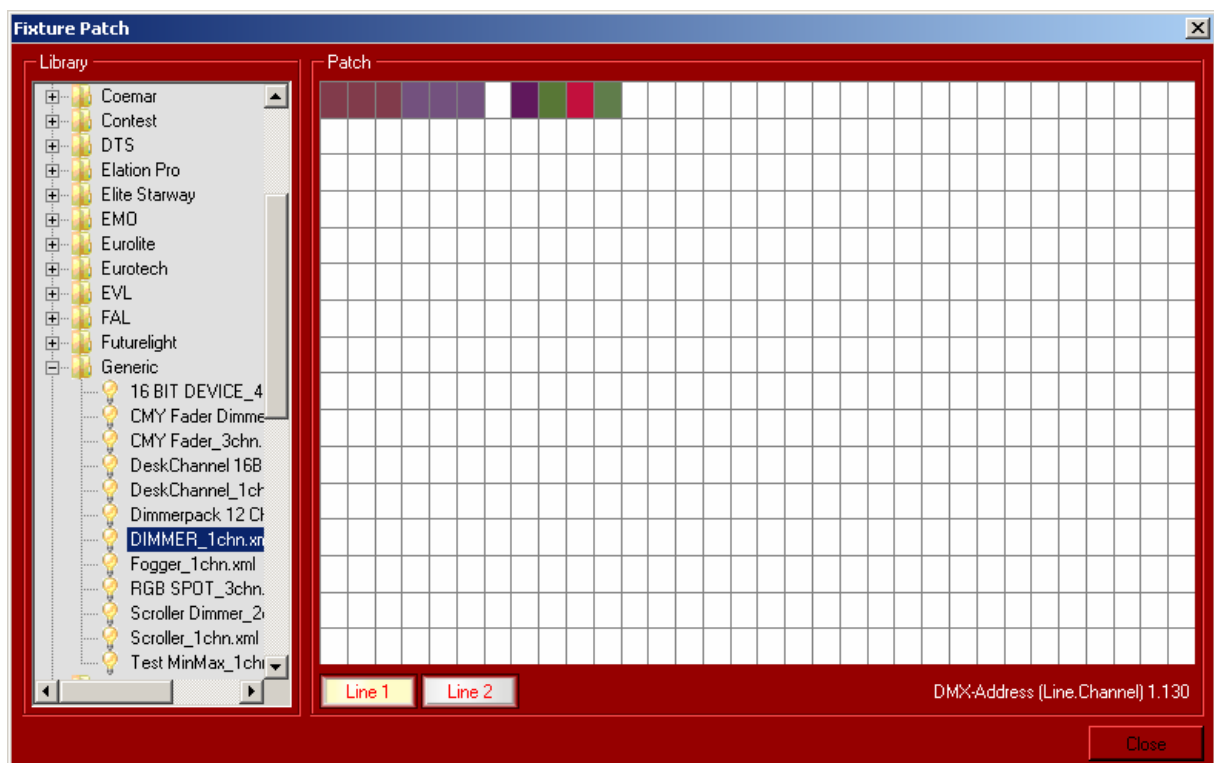
Select „DIMMER\_1CHN“ move with **left mouse-key** (hold) and drop to **Channel 8**



Select in the new Window “4” Fixtures:



The new patching window should look like:



Close the Patching Windows with „Close“ Button on lower right.

Now you have 2 RGB Lights and 4 Dimmer Channels patched successfully.

**Channel 7 is NOT PATCHED and have NO OUTPUT (always zero!).**

**For DMX Output on Channel 7 you need to add a Fixture on this channel!**

