

DMX DEMULTIPLEXERS - DMX TO ANALOG

3006C-EP RDM - 6 channel

Small footprint, but a great performer! The 6-channel demux measures just 70mm x 70mm, features 4 DMX RDM personalities, and offers an additional grand master. PSU: 15-24VDC, 6x 0...10V out



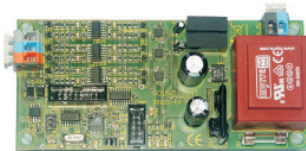
3012B-EP RDM - 12 channel

High power on a small footprint is the main attribute of the 3012B analog demux. The 12-channel device features DMX Hold, 4 Personalities and an optional grandmaster. PSU: 15-24VDC, 12x 0...+10V out



3012C-EP RDM - 12-ch bipolar Demux

Output voltage 0...+10V or 0...-10V: your choice. Simply configure via DMX RDM. The 3012C-EP features buffered outputs and drives passive or active loads seamlessly. Power supply: 230V, 12 outputs



3004A-H RDM Universal Demux

4 outputs drive all kind of electronic ballasts: 1-10V analog, DSI opr DALI digital. Ideally suited for architectural lighting applications. Power supply 230V AC, width 4U. Snaps on DIN rail.



DMX RELAYS / CONTACTORS

3206R-H - High Power Relay

The proven 6-output power relay is now available for RDM installations. Simply set all parameters (e.g. trip points) remote using your preferred RDM controller.



3266R-H - Memory Relay

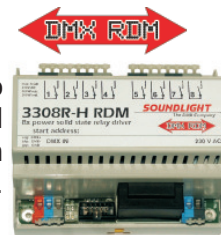
DMX control immune to power failure: even a complete loss of power does not affect this power contactor. All settings are retained magnetically. 6 power contacts 230V / 10A. Supply 230V AC, width 6,5U Standard DIN rail mount



DMX SOLID STATE AC-RELAY 230V

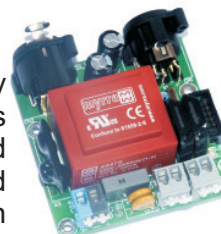
3308R-H RDM - 8-ch SSR

No switching noise, no clicks, no sparks: the silent 3308R-H RDM controls 8x up to 230V@300W each and snaps neatly on a DIN rail. Power supply 230V AC, width 6,5U



3302R-EP RDM - 2-ch SSR

The smallest Solid State Relay measures just 7cm x 7 cm, provides Neutrik XLR on-board connectors and controls up to 2x 500W@230V and features optical isolation between DMX IN and Power Out. Supply: 230V AC, 2x 230V/500W



Equipment for
DMX RDM



DMX LED CURRENT DRIVER



5024A-FG - Linear LED Current Source

The 5024A-FG is a lighting technology powerhouse: 24 individual outputs drive up to 12 high-power-LEDs using 24v/700mA. Our modulation-free DirectDrive Technologie is optimally suited for sensitive applications including exhibitions, airports, MRT-rooms and more. Now available with RDM firmware. Power supply: 230V AC appr. 400W Format: 19" 2U

9006A-H - LED Multi-Driver

Current controlled LED driver for high power LEDs and bidirectional communication via Remote Device Management. Also for DMX512/1990 and DMX512A. 6 outputs 0...350mA, 1-5 LEDs each.



DMX DIMMER

5901A-H - The RDM Dimmer

The compact power dimmer drives up to 2kW and features separate fusing for electronics and power stages. Built-in temperature-controlled fan. Power Supply 230V AC, width 6,5U, DIN rail mount.

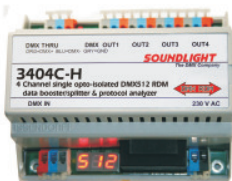


DMX SPLITTER / BOOSTER

Optimum signal distribution requires a splitter/booster to split one DMX line into several individual branches. The splitter amplifies and isolates the DMX signal and improves the overall performance of the DMX data distribution system. RDM installations require bidirectional splitters to enable backward data transmission. RDM splitter will also process standard DMX data, making them backward compatible to DMX512/1990 and DMX512A systems.



3404C-H - The RDM Splitter



The latest version for bidirectional communication using DMX RDM. Also suited for DMX512/1990 and DMX512A. The splitter features four individually optically isolated data ports, full signal analysis and display. Power supply 24V DC or 230V AC.

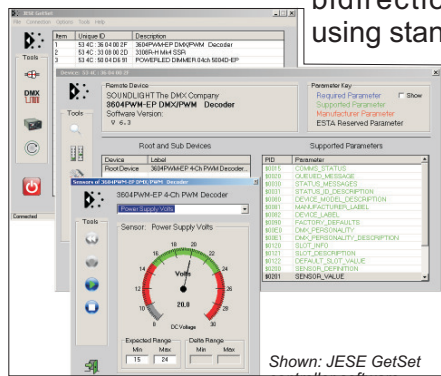
WHAT IS DMX RDM?



DMX RDM means "Remote Device Management". It is the new, international DMX standard for bidirectional communication using standard DMX wiring. Until now, only unidirectional data transfer has been possible.

RDM units can be administered and can be set from the controller: changing the start address or DMX personality is

now a matter of seconds. Additionally, lamp hours, head temperature, fluid levels or fan speed can be read out - just to mention a few. When set up properly, DMX RDM is fully compatible with previous standard DMX formats.



Shown: JESE GetSet controller software

DMX - DALI INTERFACES



7044A-H RDM - DMX to DALI

To feed DMX signals into a DALI bus system you will need the 7044A-H DMX to DALI converter. Addressed or group commands can be derived from 4 to 16 DMX data slots. Power supply 230V AC, width 4U



3804B-H RDM - DMX to DSI DMX to DALI DMX to PWM

For signal outputs allow direct connection of DALI ballasts without any need of additional addressing or DALI PSU. The 3804B-H issues DALI broadcast commands and can be set to DSI or PWM output, alternatively. Power supply 230V AC or 24V DC, Mounting on standard DIN rail, 4U



DMX UNIVERSAL INTERFACE

4801A-H - Mr. Do-it-all

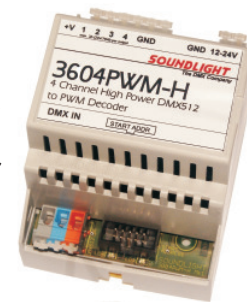
Regenerate DMX, convert to serial RS-232 output (e.g. Beamer control), convert DMX to text output, drive servos and much more. Customer-specific designs available. For more information visit our website: <http://www.soundlight.de/produkte/4801a-h>



Customer-specific RDM solutions

Make the bundled know-how of *The DMX Company* available to your projects! Our research and development team provides reliable solutions powered by our modular design. Performance: High. Cost: Low. What are you waiting for?

DMX LED VOLTAGE DRIVER



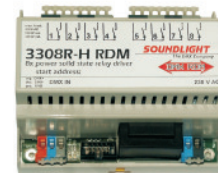
3604PWM-H - LED Driver

High-power LED driver to drive voltage controlled LED tapes or LED-assemblies. High resolution and a quasi-logarithmic curve guarantee unmatched smooth dimming. 4 power outputs 12...24V DC max. 3A

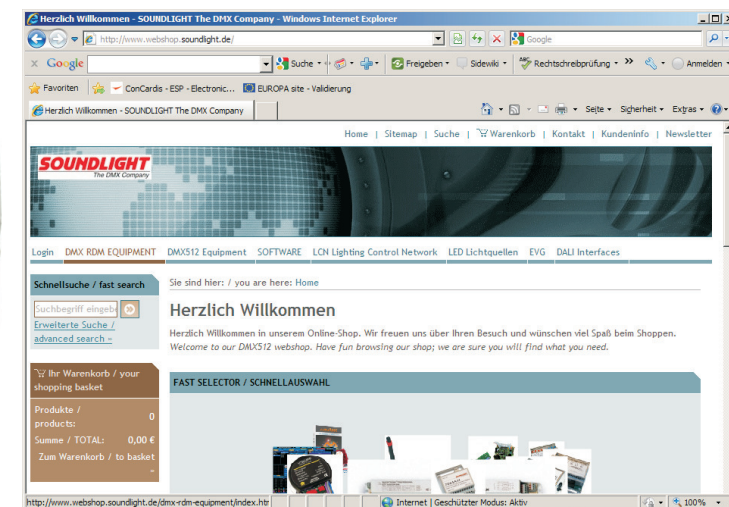
DMX SOLID STATE DC-RELAIS

3308R-HDC RDM - DC SSR

The perfect interface do control SPS, switch DC loads and more: The 3308R-HDC controls 8 potential-free outputs up to 30V/500mA, using bounce-free and noise-less electronic power MOSFET switches. Power supply 230V AC, width 6,5U



THE SOUNDLIGHT WEBSHOP



All RDM products (and all other standard DMX tools, of course) are available directly from our webshop: www.webshop.soundlight.de